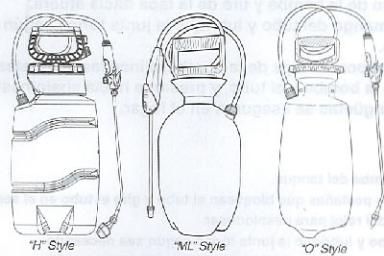


The Fountainhead Group, Inc. Owner's Manual



Do not return sprayer to store, if you experience problems or have questions contact our toll free Customer Service Center, M-F 8 a.m. - 5 p.m., EST, at 1-800-311-9903, or e-mail: Info@TheFGI.com, or access online at: www.TheFountainheadGroup.com.

WARNING

The sprayer is operated with liquid under pressure. Failure to observe CAUTION and to follow instructions for operating and cleaning can cause tank, hose and other parts to be weakened and rupture under pressure. This can result in serious injury from high pressure discharge of liquids or forcible ejection of parts. **DO NOT USE FLAMMABLE MATERIALS IN THIS SPRAYER.** Material could ignite or explode, causing serious injury and/or possible death. For safe use of this product, you must read and follow all instructions before use.

TEST SPRAYER WITH WATER BEFORE USING ANY CHEMICALS.

SAFETY PRECAUTIONS

- Read owner's manual completely before operating this sprayer.
- Always wear safety goggles, gloves, and protective clothing when using sprayer.
- Read and follow all instructions and cautions on label of products used in this sprayer.
- Never use flammable liquids, caustics, acids, or hot water in this tank.
- Do not leave sprayer in the sun when not in use.
- Spray when air is calm to prevent drift of chemicals.
- Do not use sprayer near open flame or anything that could cause ignition of the spray.
- Always inspect the hose and all hose connections before each use. A damaged hose, or loose hose connection can result in unintended exposure to the pressurized chemical, resulting in serious injury or property damage.
- Do not lift or carry sprayer by the hose, shut-off valve, or wand extension. Carry by pump handle only, making sure handle is properly locked in place before lifting.
- Do not pressurize with any mechanical device such as an air compressor, since this can create dangerous pressure level and bursting of parts resulting in serious injury. Only use original or replacement pump supplied by the original manufacturer.
- Do not store chemicals in this tank.
- Always release pressure when sprayer is not in use and before removing pump from tank.
- Do not stand with face or body over top of tank when pumping or loosening pump, to prevent pump and/or solution from striking you, resulting in serious injury.
- Clean and rinse sprayer thoroughly after each use.
- Never attempt to alter sprayer from original condition.
- Always use replacement parts from original manufacturer.
- Keep the sprayer and all chemicals out of the reach of children and pets.

ASSEMBLY INSTRUCTIONS

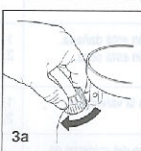
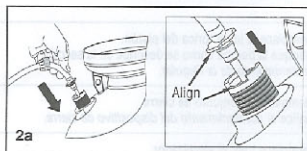
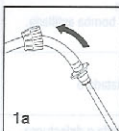
IMPORTANT

Do not attempt to heat or alter hose, hose nut, or barb prior to assembly.

It is recommended to test the sprayer using plain tap water before spraying chemicals. Test all connections for possible leaks. Use proper eye protection while testing. If sprayer does not pass the water test, call our Customer Service Center before using sprayer with chemicals. Make sure hose is not cracked or frayed and does not show signs of swelling. Make sure hose is securely connected to sprayer. **DO NOT USE TOOLS TO TIGHTEN HOSE NUT.**

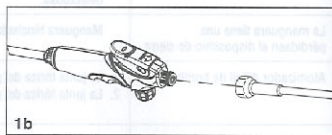
Assemble Hose to Tank

- Slide hose nut back on hose to expose hose barb.
- Push hose barb into tank until it stops. Align hose barb tabs with cutouts in tank.
- Slide hose nut into place and turn clockwise to tighten.



Assemble Extension to Shut-Off

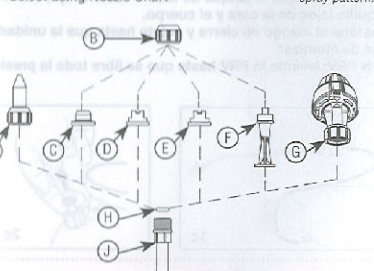
- Install the extension onto the shut-off assembly and tighten the nut securely.



Note: Some extensions are sold pre-assembled to nozzle and shut-off as a complete assembly.

Install the Nozzle

Select using Nozzle Chart



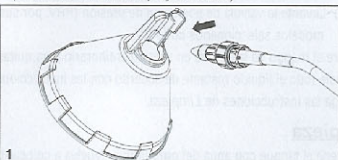
NOZZLES INCLUDED WILL VARY DEPENDING ON SPRAYER MODEL PURCHASED

- | | |
|-------------------------------|---|
| A. Adjustable Cone Nozzle | E. Yellow Low-Volume Fan Nozzle |
| B. Cap Nut | F. Foaming Nozzle |
| C. Blue Watering Nozzle | G. Multi-Nozzle |
| D. Red High-Volume Fan Nozzle | H. O-Ring (some models are sold pre-assembled to extension) |
| | J. Extension |

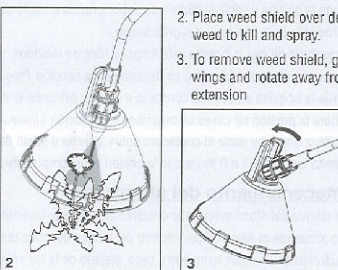
ADJUSTABLE CONE USES:	FOAMING NOZZLE USES:
<ul style="list-style-type: none"> Spot spraying in or around flower beds, lawns, shrubs, and driveways. Edging along fences, driveways, and walkways. Killing brush such as poison ivy, poison oak, kudzu and wild blackberry. Preparing garden beds for planting of ornamentals and vegetables. 	<ul style="list-style-type: none"> Spot spraying in flower beds, lawns, shrubs, and driveways. Edging along fences, driveways, and walkways. Killing brush such as poison ivy, poison oak, kudzu and wild blackberry.
RED HIGH VOLUME FAN NOZZLE USES:	YELLOW LOW VOLUME FAN NOZZLE USES:
<ul style="list-style-type: none"> Lawn replacement. Kill lawn and weeds before planting a new lawn. Preparing large areas for planting of ornamental and vegetable gardens. 	<ul style="list-style-type: none"> For precision spraying in confined areas such as gardens and flower beds.
BLUE WATERING NOZZLE USES:	
<ul style="list-style-type: none"> Watering and feeding plants and vegetables both indoors and outdoors. 	

Install the Weed Shield

(Included with certain sprayer models)



- Insert nozzle and snap weed shield securely to extension.



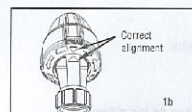
- Place weed shield over desired weed to kill and spray.
- To remove weed shield, grasp wings and rotate away from extension.

OPERATING MULTI-NOZZLE

IMPORTANT Read Safety Precautions! Always make sure shut-off handle is released before rotating nozzle to different spray setting. Make sure arrow indicators are aligned before spraying. Failure to do so may result in leaks.

Rotating

- While holding shut-off with one hand, rotate multi-nozzle to desired nozzle position.
- Nozzle end will fall into place as arrow indicators become aligned.



STREAM USES:	FAN USES:	CONES USES:
<ul style="list-style-type: none"> Spot spraying in flower beds, lawns, shrubs, and driveways. Edging along fences, driveways and walkways. 	<ul style="list-style-type: none"> Lawn replacement. Kill lawn and weeds before planting a new lawn. Preparing large areas for planting of ornamental and vegetable gardens. 	<ul style="list-style-type: none"> Killing brush such as poison ivy, poison oak, kudzu and wild blackberry. Preparing garden beds for planting of ornamentals and vegetables.

OPERATING THE SPRAYER

IMPORTANT

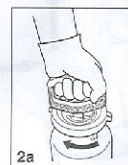
Read Safety Precautions! Always make sure the pressure is released from the tank before filling or servicing.

This sprayer is designed for lawn and garden use only. Do not use harsh chemicals or cleaners.

Filling

Fill the tank to the desired level. (Always refer to chemical manufacturer for proper mixture).

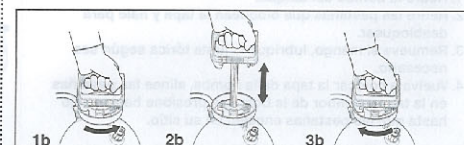
- REMOVE PUMP:** Turn handle counter-clockwise
- INSTALL PUMP:** Turn handle clockwise until tightly sealed on tank.



Pressurizing

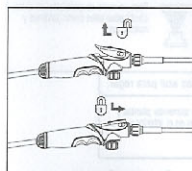
Make sure shut-off handle lock is not engaged. (If lock is engaged while pressurizing, the unit will immediately start spraying).

- Push down on the handle and turn counter-clockwise to unlock the handle.
- Pump handle in a smooth up and down motion until pressure builds up.
- Push down on handle, turn clockwise to lock in place.

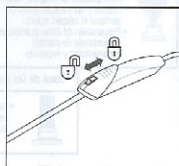


Spraying and Locking

1. Squeeze shut-off handle to begin spraying.
2. Release shut-off handle to stop spraying.
3. For continuous spraying, squeeze handle and slide lock as shown.



"H" & "O" Style

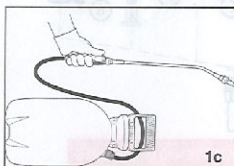


"ML" Style

Release Tank Pressure

Pressure Release Valve (PRV) on select models

- 1c. NO PRV: Place tank on side or upside down, direct nozzle away from face and body, squeeze shut-off handle and hold down until unit stops spraying.
- 2c. WITH PRV: Pull up PRV until all pressure is released.



1c



2c

Finish

1. Depressurize the tank as described in *Release Tank Pressure* section.
 - A.) Lay tank on its side with the hose outlet on the bottom. Direct nozzle away from face and body and squeeze the shut-off handle until unit stops spraying. This will release pressure in the tank.
 - B.) On select models with Pressure Release Valve (PRV), pull up on the PRV until all the pressure is released from the tank.
2. Turn the pump handle counter-clockwise to remove the pump.
3. Empty any remaining liquid according to the product disposal directions.
4. Follow *Cleaning* instructions.

Cleaning

1. Fill the tank with clean tap water. Replace the pump and tighten securely.
2. Agitate the tank to rinse the chemicals from the tank wall and pump.
3. Remove the pump and empty the contents into gravel or bare soil.
4. Refill the tank with clean tap water.
5. Make sure the pump is free of dirt or debris, and re-install into the tank. Tighten securely.
6. Pressurize the tank as described in the *Pressurizing* section.
7. Direct the nozzle away from yourself and squeeze the shut-off handle for at least 30 seconds to clean the hose and shut-off.
8. Release pressure as described in the *Release Tank Pressure* section.
9. Remove the pump and empty the contents into gravel or bare soil.
10. Repeat steps 1-9 until thoroughly cleaned.

Sprayer Storage

1. Sprayer tank should be hung upside down, with the pump removed.
2. Do not store or leave any solution in tank after use.
3. Store in warm, dry location out of direct sunlight.
4. Keep the sprayer and all chemicals out of reach of children.

REGULAR MAINTENANCE

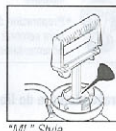
Pump & Shut-Off Maintenance

Lubrication

Pump should be periodically oiled by applying 10 to 12 drops of light oil down the pump rod through the opening in the pump cap, as shown:



"H" Style



"ML" Style



"O" Style

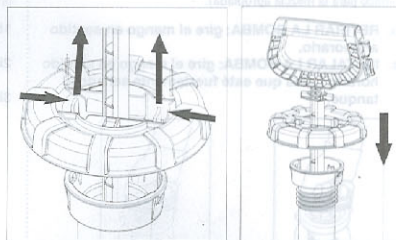


O-rings dry out and become brittle. Apply petroleum jelly liberally to part(s) as shown, or replace.

Disassembly & Reassembly *As shown on varying models*

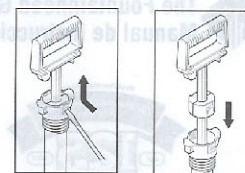
"H" Sprayer

1. Remove pump from tank.
2. Squeeze tabs that lock cap and pull to unlock.
3. Remove handle, lubricate o-ring as required.
4. Replace pump cap, align tabs on pump cap and barrel, and push down until tabs lock into place.



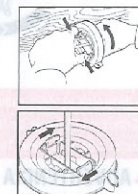
"ML" Sprayer

1. Remove pump from tank.
2. Push tabs in on both sides of the pump cylinder and pry up pump cap.
3. Pull pump handle out of barrel, lubricate o-ring as required.
4. Replace pump cap, align tabs on pump cap and barrel, and push down until tabs lock in place.



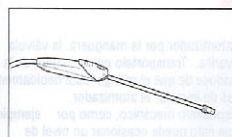
"O" Sprayer

1. Remove pump from tank.
2. Squeeze tabs that lock barrel and turn counter-clockwise to unlock.
3. Remove barrel, lubricate o-ring as required.
4. Re-insert barrel into cap, turn barrel clockwise to lock tabs back in place.



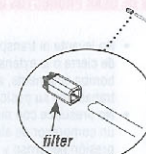
Shut-Off Maintenance

If shut-off clogs, remove the shut-off assembly and check for any obstructions at the dip tube or filter. If none present, disassemble the shut-off assembly. Clean the openings of any obstructions and re-assemble tightly securing all sections.



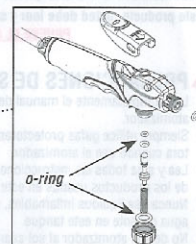
"ML" Style

This shut-off is not serviceable.



"H" & "O" Style

Clean out or replace parts. Filter not included in all models.



Limited Warranty

Warranty card is provided in unit parts bag or call our toll free hotline, or access online at www.TheFountainheadGroup.com. To obtain warranty service, contact us at: The Fountainhead Group, Inc., c/o Customer Service, 23 Garden Street, New York Mills, New York 13417, (315) 736-0037 or call prepaid, (800) 311-9903

SERVICE KITS AND REPAIR PARTS ARE AVAILABLE. Contact Customer Service at 1-800-311-9903, e-mail: Info@TheFGI.com, or website: www.TheFountainheadGroup.com

TROUBLESHOOTING

TROUBLE	LOOK FOR	REMEDY
Sprayer starts to spray when pumping or sprayer will not stop spraying when shut-off handle is released.	Shut-off lock is engaged.	Squeeze shut-off handle and disengage the lock.
Sprayer leaks at pump or sprayer does not build pressure.	1. Dirt or debris on pump gasket or closure. 2. Chipped, torn, swollen or defective pump gasket. 3. Check valve at bottom of pump assembly. 4. Inspect o-ring on piston. 5. Loose hose.	1. Clean dirt or debris from gasket or closure. 2. Remove old gasket and replace with new. 3. Replace if missing or damaged. 4. Lubricate the pump as described in <i>Regular Maintenance</i> section. 5. Re-insert hose barb, then tighten hose nut.
Sprayer material overflows through pump barrel or pump handle rises when handle is unlocked.	1. Dirt or debris under check valve on pump. 2. Chipped, torn or swollen pump check valve.	1. Clean check valve and valve sealing surface on pump. 2. Replace check valve.
Hose leaks at tank.	1. Loose hose. 2. Cracked, swollen or faulty hose.	1. Re-insert hose barb, then tighten hose nut. 2. Replace shut-off assembly.
Hose leaks at shut-off.	Swollen, slit or faulty hose	Replace shut-off assembly.
Sprayer is difficult to pump.	1. Damaged piston o-ring. 2. Piston o-ring is dry.	1. Replace piston o-ring. 2. Lubricate the pump as described in <i>Regular Maintenance</i> section.
Nozzle drips when shut-off handle is released.	Dirt or debris in shut-off valve.	1. Replace shut-off assembly. 2. See <i>Shut-off Maintenance</i> section.
Sprayer tank leaks.	Evidence of spray material escaping from the tank.	Replace entire sprayer.
Nozzle tip leaks, poor spray pattern, partial spray or complete stoppage.	1. O-ring is missing or damaged. 2. Spray extension or nozzle clogged. 3. Dip tube filter clogged.	1. Replace o-ring at extension tip. 2. If applicable to sprayer model, remove and clean the extension and nozzle. 3. If applicable to sprayer model, remove and clean the dip tube filter.